

NOTE: Armored Joint Supports to be shop assembled. All shopwelds to be $\frac{1}{4}$ " continuous fillet welds. Field welds for attaching supports to exist stringers to be $\frac{1}{4}$ " fillet welds. Armored Jt. Plates to be attached by plug welding, using existing bolt holes where possible. Where necessary, drill $\frac{1}{4}$ " x 1" slots in joint plates for plug welding. Min. spacing of plug welds to be 12".

- GENERAL NOTES
- All Lumber to be Construction Grade Douglas Fir, or the equivalent in Southern Yellow Pine (Yellow = 1300#/ft³). Pressure treated by the empty Cell Process, after all cutting operations are completed. Minimum Retention shall be 12 pounds per cubic foot. Preservative shall be Creosote Oil or specified in AASHTO M 133.
 - All Bolt Holes, Rod Holes, etc. cut in the field shall be saturated with Creosote Oil before installation.
 - All Bolts, Nuts, Washers, Drive-Spikes, etc. shall be Galvanized.
 - On Truss Span Deck Planking shall be fastened as follows. Each Deck Plank shall have 3 Drive Spikes along & of Fascia Stringers, and 3 Drive Spikes on & of every other Interior Stringer, staggered with spikes in adjacent Planks.
 - All Deck Planking to be installed with rough Side up.
 - Holes for Dome Head Drive Spikes to be predrilled to $\frac{1}{8}$ " diam. Holes for Bolts in Curbs to be drilled $\frac{1}{8}$ " diam.

DESIGN - K. Jacobs	BRIDGE NO. 2039
TRACE - K. Jacobs	SURVEY -
CHECK - E. Bernard	PLOT -

STATE HIGHWAY COMMISSION
 BRIDGE DIVISION
BARTERS ISLAND BRIDGE
 OVER
BACK RIVER
 TOWN OF
BOOTHBAY, LINCOLN COUNTY
 DECK REPLACEMENT
 PLAN & SECT'S

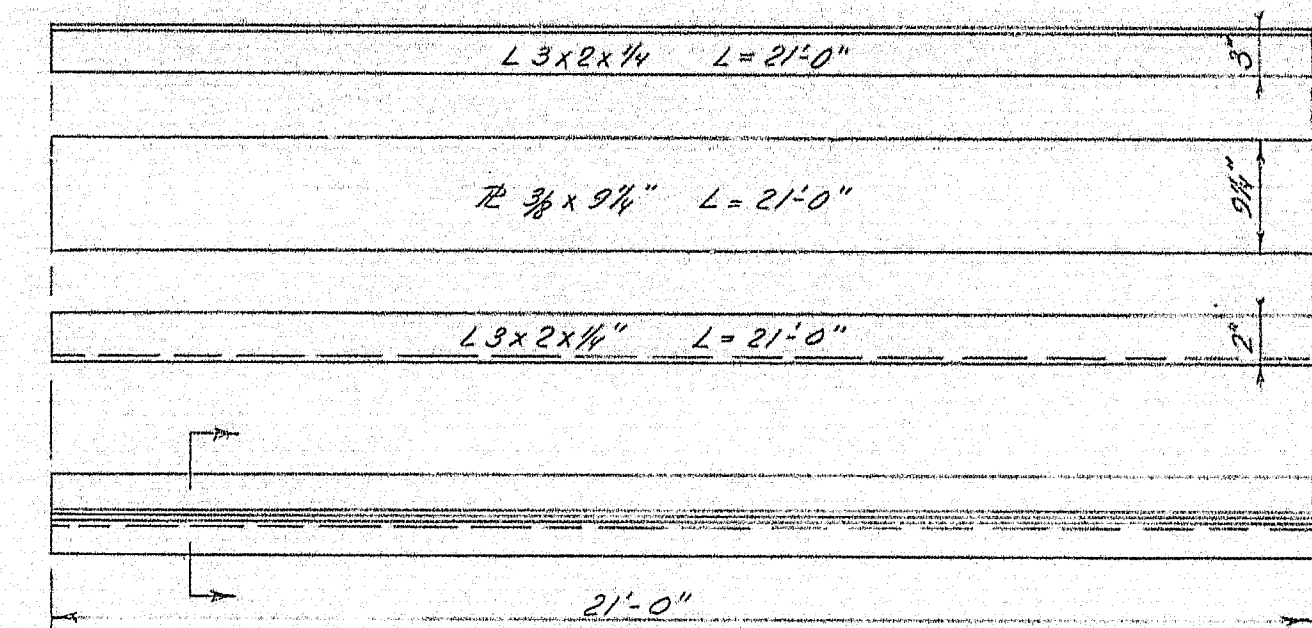
SHEET 1 of 2 AUGUSTA, MAINE MAY 1969

TIMBER SCHEDULE									
Work Span	Description	Nominal Size	No	Finished Dimensions			Location		
				End Elev.	Plan	End Elev.			
D-1 1/2 3/4	Deck Planking	12"x6"	175	11 1/2"	5152E 21'-0"		Deck Span 1, 2, 3 & 4		
D-2 Truss Span	Deck Planking	12"x4"	120	11 1/2"	5152E 21'-0"		Deck Swing Span		
SP-1 1	Spiking Piece	8"x6"	5	7 1/2"	545 20'-8"		From Abut. 1 to Center Span 1		
SP-2 1/2 2	Spiking Piece	8"x6"	10	7 1/2"	545 20'-0"		Center Span 1 to Pier 1 Pier 1 to Center Span 2		
SP-3 2	Spiking Piece	8"x6"	5	7 1/2"	545 20'-4"		Center Span 2 to Pier 2		
SP-4 3	Spiking Piece	8"x7"	5	7 1/2"	545 20'-4"		Pier 4 to Center Span 3		
SP-5 3/4 4	Spiking Piece	8"x7"	10	7 1/2"	545 20'-0"		Center Span 3 to Pier 5 Pier 5 to Center Span 4		
SP-6 4	Spiking Piece	8"x7"	5	7 1/2"	545 20'-8"		Center Span 4 to Abut. 2		
F-1 1/2 4	Filler	1"x5"	2	4 1/2"	545 21'-0"		Under Wide Side of Armored Jt. Span 1 & 4 @ Pier 1 & 5		
F-2 1/2 3/4 4	Filler	3"x5"	4	3 3/4"	545 21'-0"		Under narrow Side of Armored Joint & Pier 1 & 5 Abut. 1 & 2 Span 1, 2, 3 & 4		
SP-7 Truss Span	Spiking Piece	6"x5"	75	5 1/2"	545 22'-0"		Top of Swing Span Stringers		
C-1 4	Curb	6"x6"	4	5 1/2"	545 20'-6"				
C-2 2/3 3	Curb	6"x6"	8	5 1/2"	545 21'-0"				
C-3 Truss Span	Curb	6"x6"	6	5 1/2"	545 21'-6"		See Curb Layout Sh. 1		
C-4 1	Curb	6"x6"	4	5 1/2"	545 22'-6"				
C-5 Truss Span	Curb	6"x6"	4	5 1/2"	545 24'-0"				
SB-1 All	Scupper Blocks	3"x6"	10	5 1/2"	545 20'-0"		Under Curbs. Cut Pcs. 12" lg in Field. 100 Req'd		
FB-1 All	Filler Blocks	2"x4"	2	3 3/4"	545 18'-0"		Below Curbs & Railposts. Cut 5 1/2" lg. in Field. 60 Req'd		

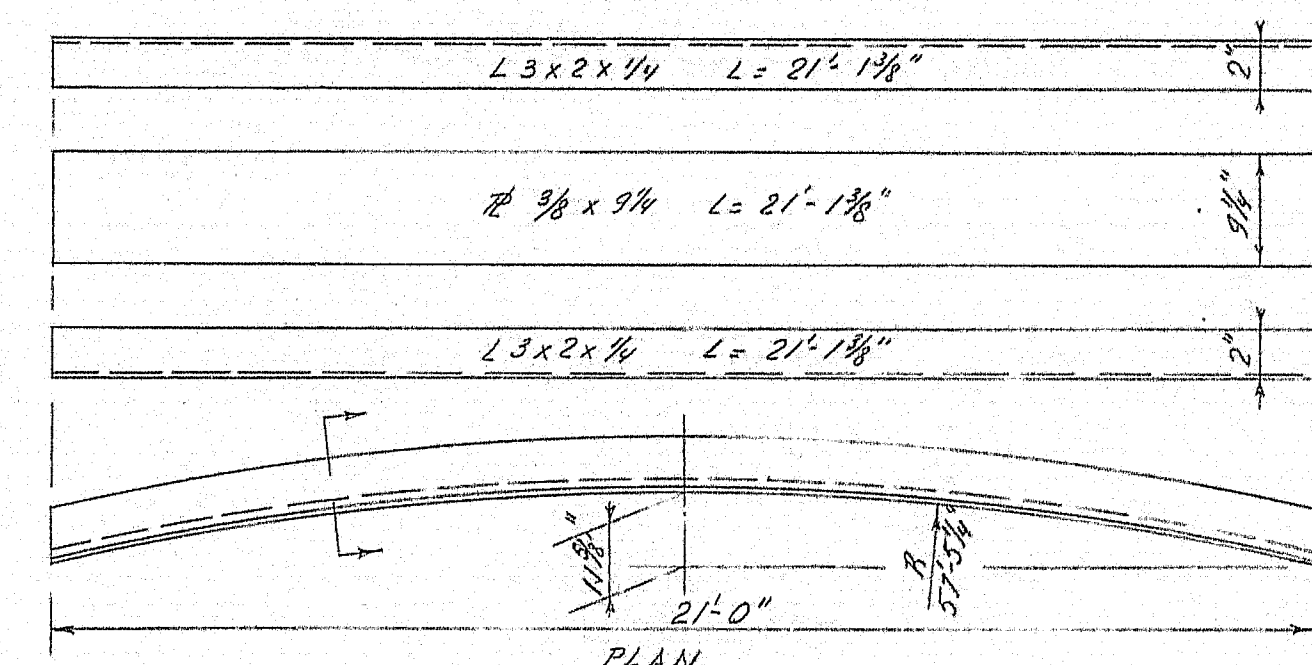
NOTE: All Pieces with only one End Elev. shown, are same X- Sect. throughout.

BOLT SCHEDULE					
Description	Dim.	Length	Nut Washer	No	Location
Carriage Bolt	1/2"	6"	1	1	225 Span 1 & 2 Stringers
Carriage Bolt	1/2"	6"	1	1	525 Truss Span Stringers
Carriage Bolt	1/2"	7 1/2"	1	1	225 Span 3 & 4 Stringers
Dome Head Grd. Rl. Bolt	5/8"	15"	1	120	Curb, Span 1, 2, 3 & 4
Dome Head Grd. Rl. Bolt	5/8"	13"	1	80	Curb, Truss Span
Sealtite Car Bolt	1/2"	9 1/2"	1	1	75 Curb, Span 1, 2, 3 & 4
Drive Spikes	1/2"	10"	—	—	2800 Deck, Span 1, 2, 3 & 4
Drive Spikes	1/2"	8"	—	—	2100 Deck, Truss Span

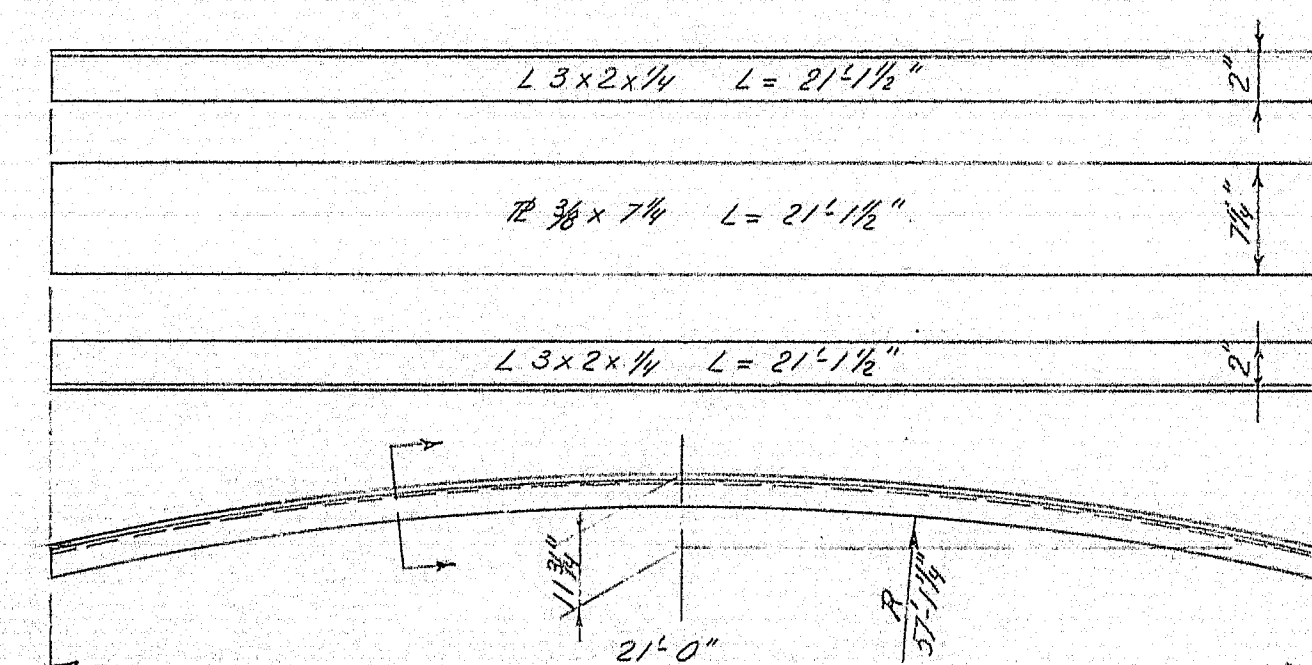
NOTE: All Material in this Schedule to be Galvanized. Drive Spikes to be Lewis Sealite Dome Head Drive Spikes as manufactured by Lewis Bolt & Nut Co. or approved equal. Dome Head Grd. Rl. Bolts to have Washers. Bolts & Nuts to be as manufactured by Lewis Bolt & Nut Co. or approved equal. All Washers to be Standard Washers. All Nuts to be Standard Square Nuts, unless otherwise specified.



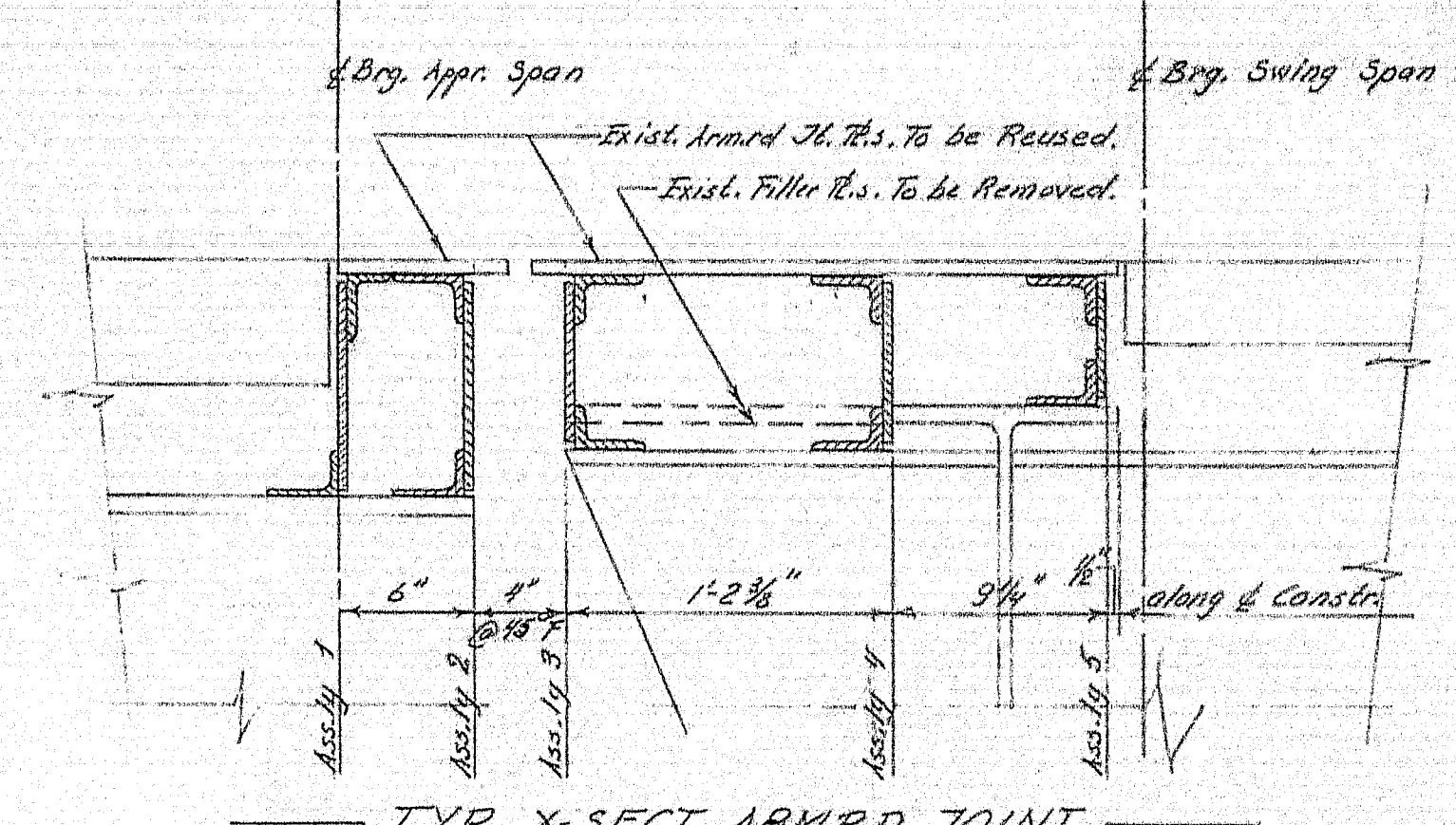
Assembly 1 2 Req'd



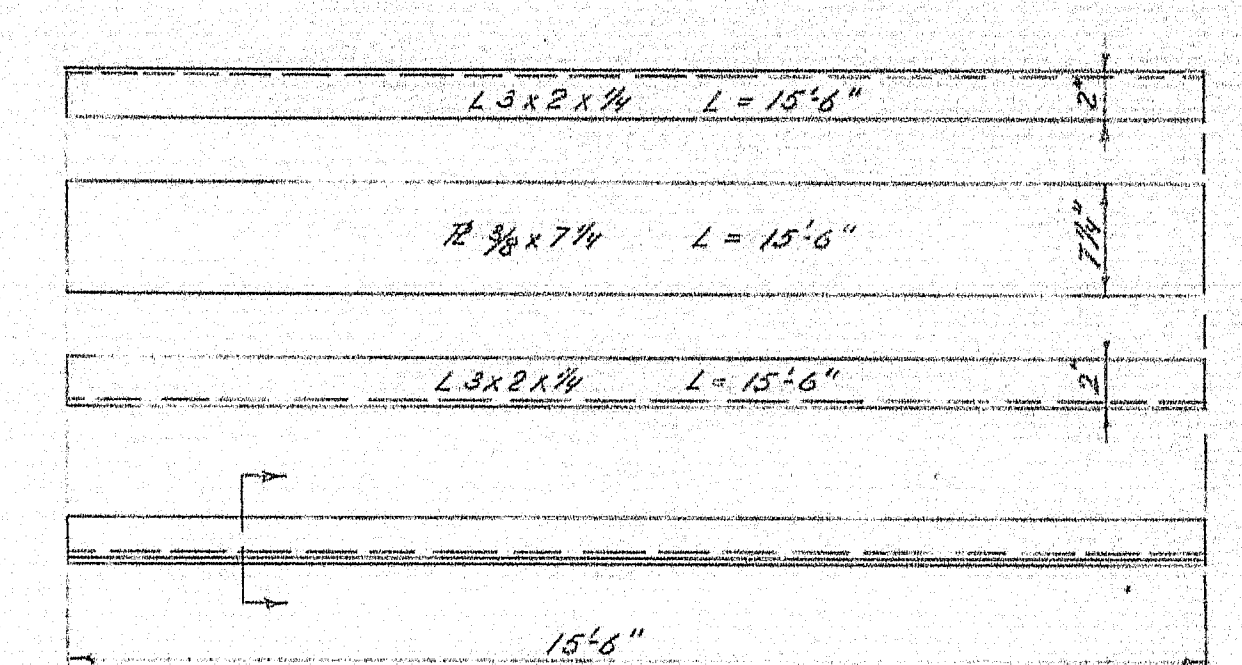
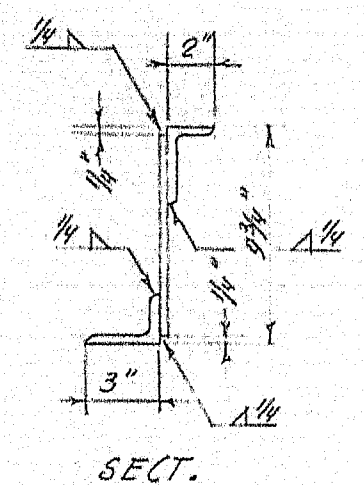
Assembly 2 2 Req'd



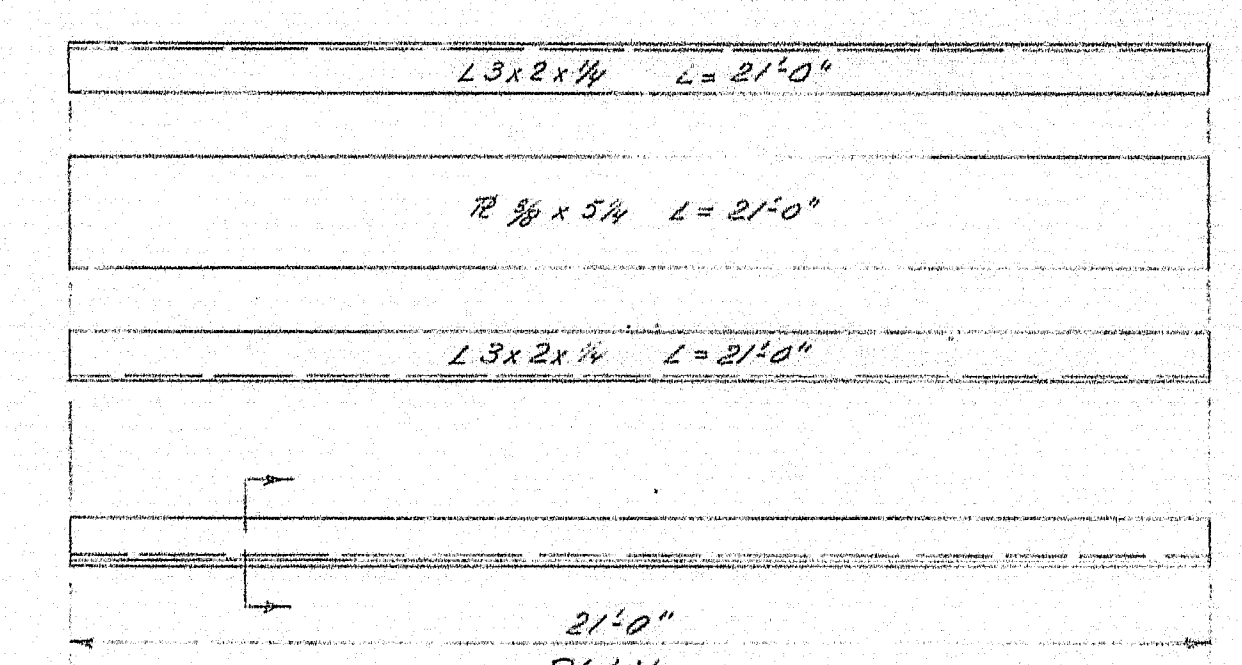
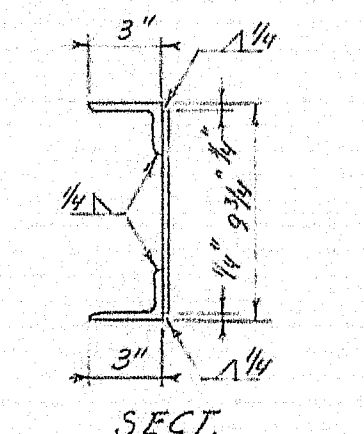
Assembly 3 2 Req'd



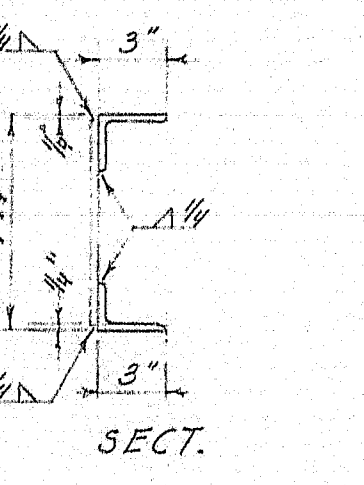
TYP. X-SECT ARMORED JOINT



Assembly 4 2 Req'd



Assembly 5 2 Req'd



Ass. No.	No. Req'd	Makeup	Weight
1	2	2-L3x2x1/4, L=21'-0" & 1-R 3/8"x7/8", L=21'-0"	890 lbs
2	2	2-L3x2x1/4, L=21'-1 1/2" & 1-R 3/8"x7/8", L=21'-1 1/2"	844 lbs
3	2	2-L3x2x1/4, L=21'-1 1/2" & 1-R 3/8"x7/8", L=21'-1 1/2"	737 lbs
4	2	2-L3x2x1/4, L=15'-6" & 1-R 3/8"x7/8", L=15'-6"	541 lbs
5	2	2-L3x2x1/4, L=21'-0" & 1-R 3/8"x5/8", L=21'-0"	625 lbs
NOTE: All Steel in this Schedule to be ASTM A 36			3587 lbs

DESIGN - K. Jacobs
TRACE - K. Jacobs
CHECK - E. Bernard

BRIDGE NO. 2039
SURVEY -
PLOT -

STATE HIGHWAY COMMISSION
BRIDGE DIVISION

BARTERS ISLAND BRIDGE
OVER
BACK RIVER
TOWN OF
BOOTHBAY, LINCOLN COUNTY

DECK REPLACEMENT
TIMBER, BOLT & STEEL SCHED. 5

SHEET 2 of 2 AUGUSTA, MAINE MAY 1969